

GPS Tracking and Telematics for Farming Equipment
Plan and Report of the activities in the fields

dotmobile.io

**The simple and cost-effective solution
to increase security and boost productivity**

for Owners, Rental Business and Contractors

Safeguard pricey assets

Secure tractors, equipment, accessories, generators and pumps.

Fasten asset recovery in case of theft to avoid costly disruption of activities.

Report and Invoicing

Simplify the report of the activities on the fields, maximize invoicing and improve cost control to support business management.

Can be integrated to the management software.

Productivity, Logistics and Maintenance

Total control over the fleet and on the fields, lean the job planning and dispatching to the drivers, avoid wasteful phone calls and time loss to reach the point of entry of each field.

Shift to predictive maintenance based on real machine data to reduce costs and avoid unexpected machine downtime.

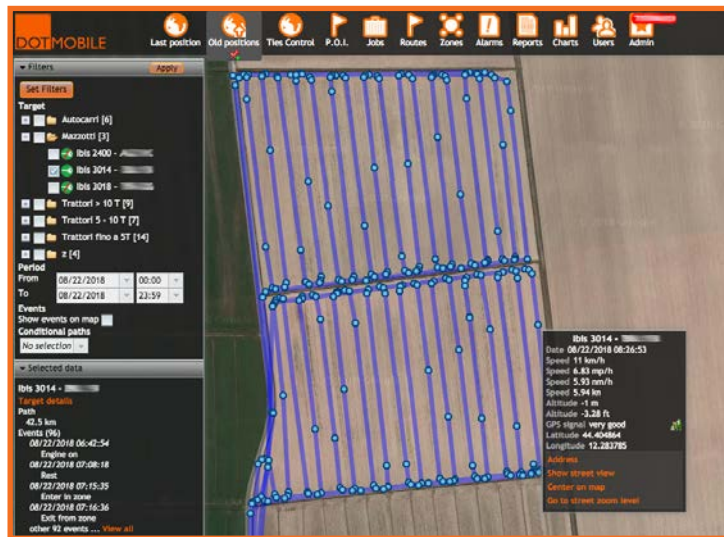
Tracking

Protect your fleet with Real Time Tracking

Multi-Map (Google, Google Satellite and Openstreet)

Multi-Language (English, French, Italian, Spanish)

- Global coverage, Multi-Carrier SIM
- Driver RFID identification to enable ignition (opt.)
- Anti-Jammer algorithm
- Multi-Alert over Text Message, Skype and e-mail:
 - ignition, towing/removal, exit from zones, low battery, jammer, cable and antenna cut...
- Immobilizer: disable ignition by remote either via WebPortal or App



Route and 36 months historical data on map, report and diagram

DOTMobile tracking algorithm is based on three parameters: time - distance - turn to have the highest position and data accuracy. Review and report the job on field, with the possibility to see direction and well defined curves on the map.

Predictive Maintenance [opt.]

DOTMobile makes finally possible to schedule service programs based on real usage and effective machine working hours, send reminder to management and report upcoming or overdue maintenance.

Machine-Equipment Dynamic Ties Control

Main tractor can be electronically linked to their accessories or equipment, for example plows, sprinklers, etc., to control if they detach over a dynamic fenced zone.

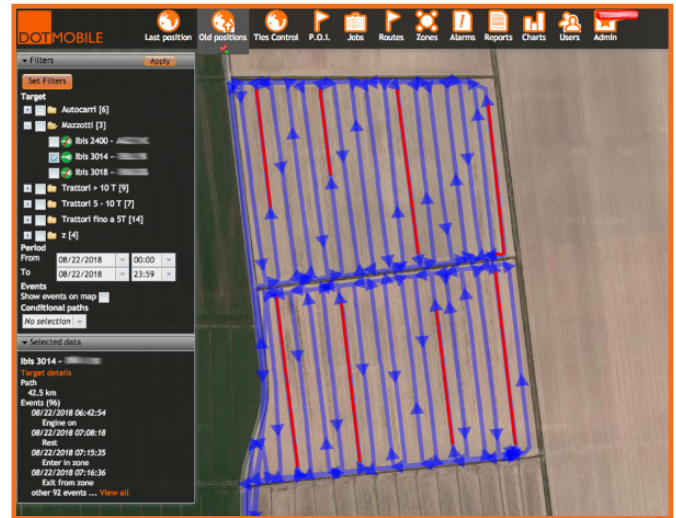
Similarly, it's possible to control harvester and loading trailers in motion.



Tracking

Spreading and Spraying

DOTMobile tracking algorithm based on 3 parameters (time, distance, turn) allows to precisely mark all the passages in each field. By wiring the start/end command of the equipment to the BlackBox, it's possible to identify on the map and give evidence of each transition with a different color.



Generators and Pumps

DOTMobile safeguard can be extended to all those equipment operating in remote areas or irrigation canals. With the IP67 water resistant BlackBox BB075 powered by the generator, or the IP67 BlackBox BB505, self-powered with long-life replaceable battery, it's finally possible to protect generators, pumps and irrigation big rolls against theft.

BlackBox

BB300, BB075 and BB505 are the main GPS units offered by DOTMobile



BB300

Extremely compact and multi-use, 8-32Vcc powered with back-up battery (up to 48 hours), built-in and external antenna, multiple I/O interface, RFID driver identification, with a range of accessories.



BB075

Compact, 8-32Vcc powered with back-up battery (up to 70 hours), built-in antennas and high water resistance, IP67.



BB505

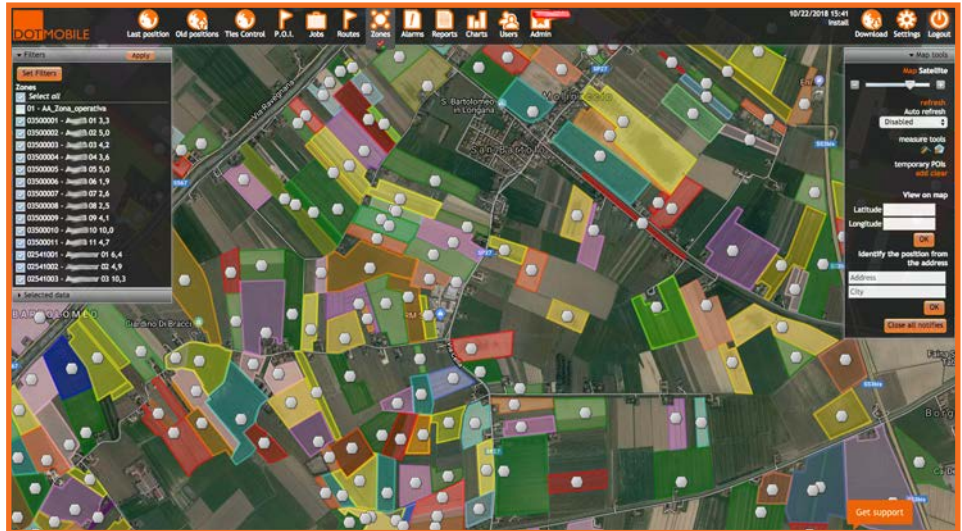
Self-powered with long-life replaceable battery (up to 515 days) and high water resistance, IP67.

Fields and Working Areas

Unlimited Fields and Working Areas on the map

Pin&Drag unlimited geofences, geographical boundaries established around certain plots of land, or working areas (yards, storages, sheds, etc.) of any shape, by simply using the mouse.

The geofences can be marked with specific colors. For each of them it's possible to pair the contact person, either Customer or Manager, listed in a dedicated record.

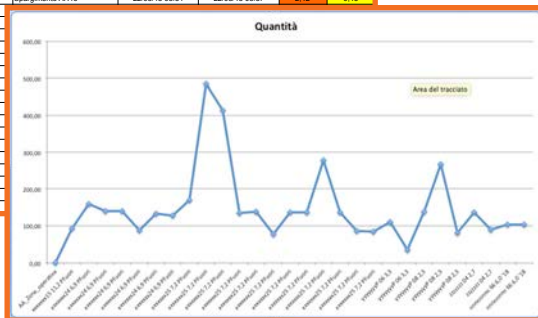


POR - Point of Reference

One or more POR can be combined with a specific geofence.

It's specially useful to lead the workers to the exact field entrance when unknown to them or difficult to find out.

Codice zona	Descrizione zona	Descrizione target	Attività	Entrata	Uscita	Tempo	Km
01	AA_Zona_operativa	bis 3014 - xx xxx xx	Spargimento AH46	22/08/18 07:15	22/08/18 07:16	1.01"	0.31
05378015	xxxxxxxxx 15 11.2 PFuori	bis 3014 - xx xxx xx	Spargimento AH46	22/08/18 07:15	22/08/18 07:16	1.50"	0.31
05378024	xxxxxxxxx 24 6.9 PFuori	bis 3014 - xx xxx xx	Spargimento AH46	22/08/18 07:37	22/08/18 07:40	2.88"	0.53
05378024	xxxxxxxxx 24 6.9 PFuori	bis 3014 - xx xxx xx	Spargimento AH46	22/08/18 07:42	22/08/18 07:44	2.8"	0.47
05378024	xxxxxxxxx 24 6.9 PFuori	bis 3014 - xx xxx xx	Spargimento AH46	22/08/18 07:47	22/08/18 07:49	2.29"	0.47
05378024	xxxxxxxxx 24 6.9 PFuori	bis 3014 - xx xxx xx	Spargimento AH46	22/08/18 07:50	22/08/18 07:52	1.43"	0.29
05378024	xxxxxxxxx 24 6.9 PFuori	bis 3014 - xx xxx xx	Spargimento AH46	22/08/18 07:57	22/08/18 07:59	2.29"	0.44
05378024	xxxxxxxxx 24 6.9 PFuori	bis 3014 - xx xxx xx	Spargimento AH46	22/08/18 07:59	22/08/18 08:02	2.8"	0.43
05378025	xxxxxxxxx 25 7.2 PFuori	bis 3014 - xx xxx xx	Spargimento AH46	22/08/18 08:23	22/08/18 08:27	3.66"	0.57
05378025	xxxxxxxxx 25 7.2 PFuori	bis 3014 - xx xxx xx	Spargimento AH46	22/08/18 08:23	22/08/18 08:32	8.92"	1.61
05378025	xxxxxxxxx 25 7.2 PFuori	bis 3014 - xx xxx xx	Spargimento AH46	22/08/18 08:27	22/08/18 08:34	6.8"	1.38
05378025	xxxxxxxxx 25 7.2 PFuori	bis 3014 - xx xxx xx	Spargimento AH46	22/08/18 08:34	22/08/18 08:37	2.42"	0.45



Job Report and Analysis

The combination of all DOTMobile features allows to control and review the machines and equipment activities to support business management.

Time, distance, analogic and digital Input within the fields, spreading and spraying passages and transitions, are all data automatically gathered, which can be exported and analysed via reports and diagrams.

Integration to Management Software

DOTMobile can be integrated to third party software via API-Webservices. Contractors can automate invoicing and synchronize with business intelligence tools.

Job Management

Plan and Dispatch Jobs to workers

With DOTMobile it's possible to plan the activities on the fields. Job Manager can list each worker and plan all activities such as plowing, fertilization, harvesting and so on, to be executed and automatically dispatch them to the smartphone of each worker.

Workers receive the jobs list and related link to Google map with the geo-coordinates to the entrance, avoiding wasteful phone calls and time loss to reach the point of entry of each field.

Job

Field: Land 01035
Customer: Crop Industries
Contact: John Smith

Job type: Plowing

Date: 09/15/2018
Time: 05:00

Contact reference :

[+1 123 456 7890](tel:+11234567890)

[Link Google Maps - Point of Entry](#)

Prices

Plans:	Yearly Billing	Monthly Billing
Tracking	\$ 169,00 (\$ 14,08 / month)	\$ 15,00
Tracking + Fields and Working Areas	\$ 179,00 (\$ 14,92 / month)	\$ 16,00
Tracking + Fields and Working Areas + Job Management	\$ 199,00 (\$ 16,58 / month)	\$ 18,00
Optionals:		
RFiD Driver identification (reader + 2 keys)	\$ 24,00	\$ 2,00
Predictive Maintenance	\$ 12,00	\$ 1,00
First 3 months billed in advance (for monthly billing only)	-	required
One off contribution, by unit Including: BlackBox configuration, activation and installation of global SIM, shipment	\$ 29,00	\$ 29,00

Sales contitions:

- Yearly agreement with automatic renewal
- Unitary prices
- Yearly or monthly billing
- BlackBox sold free of charge
- No cancellation penalty
- Global, Multi-Carrier SIM and data traffic* included
- BlackBox warranty automatically extended at plan renewals

End User Price List 2018 - Rel 1.0 Unitary price, US\$. For orders higher than 20 units ask for a quote.

* Australia, Canada, Cayman Islands, Europe, Mexico, New Zealand, SouthAfrica, US included. Others will be charged separately, contact us for their rates. 30 monthly text messages per account included, overage invoiced separately. Unlimited, free of charge e-mails and skype messages.



dotmobile.io

USA

13499 Biscayne Blvd. TSI - Miami FL 33181
info@dotmobile.io

EU

Via Romolo Murri 21 - 48124 Ravenna IT
info@puntomobile.it