



**Configurable GPS Tracking and Telematics  
for  
Motorbikes, Forklifts, Vehicles**

[dotmobile.io](http://dotmobile.io)

**The configurable solution which helps managing mixed fleets.  
Higher control, increasing security, safety and improving productivity**

## **For Owners and Rental Business**

### **Security and Protection**

**Better protect your fleet. Fasten recovery of key assets in case of theft, customer default or delayed loan payments, reducing impact on your business due to prolonged outages.**

### **Reporting and Billing**

**Keeping control of critical vehicle and drivers data, distance, speed, fuel consumption, temperature, etc. , boosts efficiency and improves customers service. It can be integrated to the management software.**

### **Maintenance and Logistics**

**Make operation easier, reduce costs and unexpected vehicle downtime, thanks to the predictive maintenance based on the mileage data automatically collated from the vehicles. Schedule maintenance jobs and automatically send reminder to management and report upcoming or overdue maintenance. Having all vehicles on one screen helps fleet planners to better serve the customer with the closer vehicle needed and to reduce transport time and costs.**

### **Total System Configurability**

**Finally customers can define the subscription fee based on each single feature, selecting those needed only, instead of packages with set of predefined features that they are obliged to pay even if not needed.**



# Security and Protection

## Secure your mixed fleet with real-time GPS Tracking, Multi-Map ( Google, Google Satellite and Openstreet )

- Global, Multi-Carrier SIM
- Anti-Jammer
- Immobilizer to disable ignition by remote in case of theft, customer default or delayed loan payments, either from WebPortal or App.

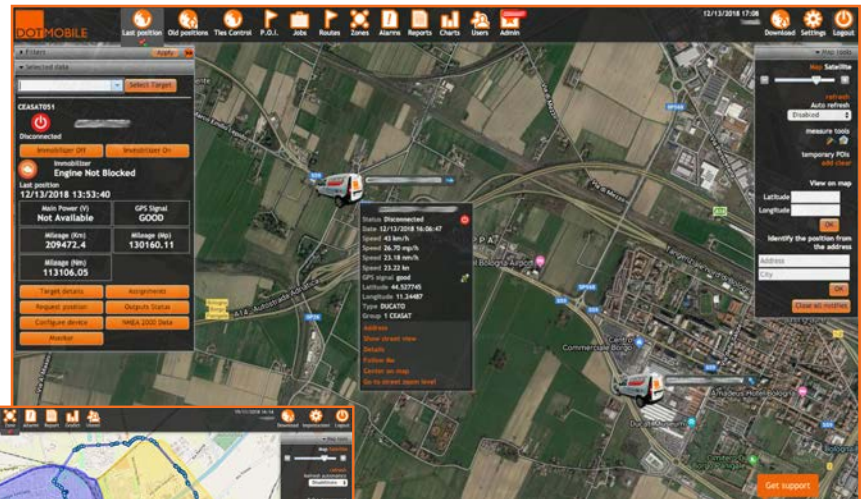
- Multi-Alarms via Text Messages, Skype and E-Mail by time zone and/or geofence: engine on, towing, entry/exit from geofence, low battery, main power or antennas disconnection, jammer, overcome speed or temperature limits...

## GPS Tracking

DOTMobile tracking algorithm is based on 3 parameters (time - distance - turn) for the highest route accuracy and detailed line, curves and direction on the map.

## 36 months Historical Data and Routes

DOTMobile records all data from any machinery and equipment in the cloud for the last 36 months which can be reviewed and exported at any time.

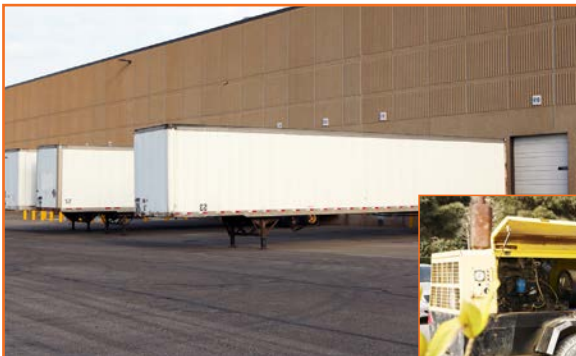


## Geofencing

Pin&Drag multi-shape, unlimited geofencing to mark specific zones of any shape, such as service area, storages, sheds, etc. and set entry/exit alerts.

## Plug and Play solution for Trailers, Generators, Containers

DOTMobile safeguard can be installed even when main power is not available, when portability across several vehicles or double security is required. With the long-life battery self powered BB505 - IP67 water resistant - it's finally possible, just switch it on and place or stick into the vehicle. Magnetic kit available.



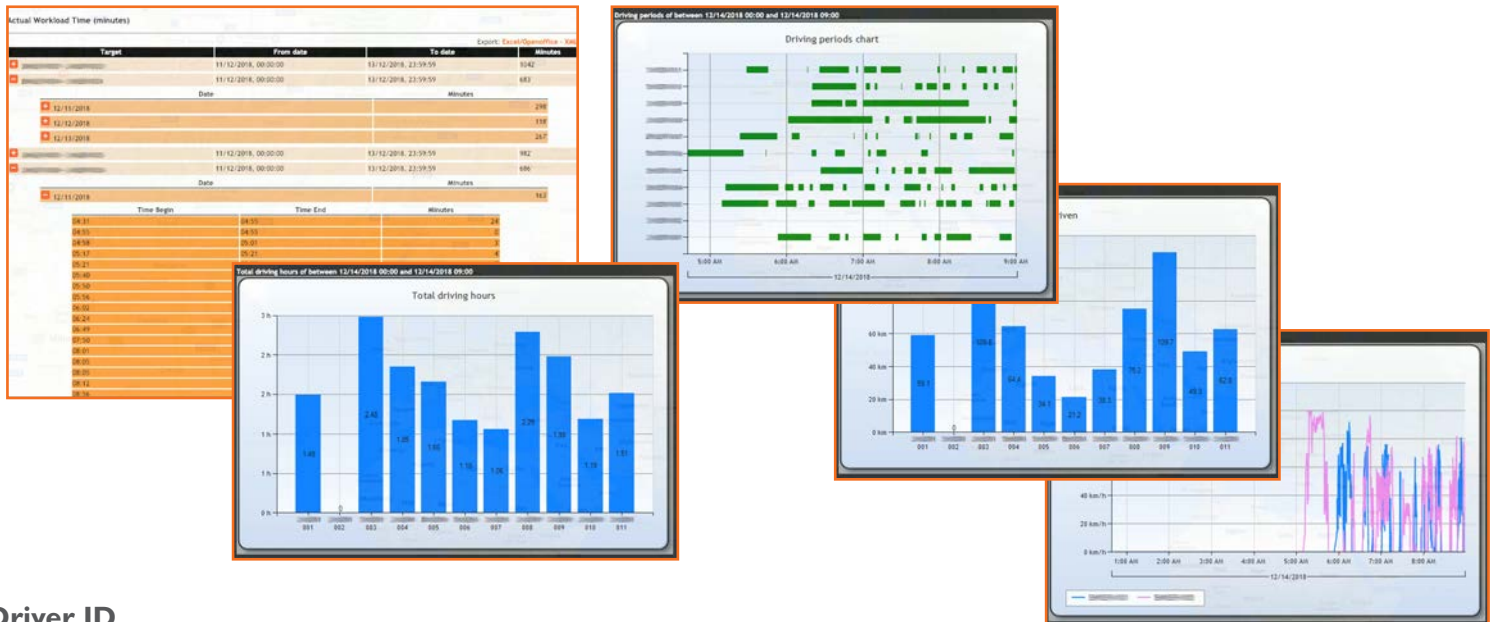
# Control and Productivity

## Reporting and Analysis

The combination of all DOTMobile features allows to control and review the fleet usage and performance to support business management. Data about actual time, mileage, fuel consumption, temperature, CANBus and digital or analogic input are automatically gathered and can be exported, analysed via reports and diagrams.

## Raise efficiency with automatic report dispatch

Users can schedule automatic report dispatch to ensure to regularly receive select report on their e-mails.



## Driver ID

The iButton RFiD to identify each driver and raise accountability by recording all related events into the history; optionally, it enables ignition.

## Temperature Sensor

To monitor temperature of refrigeration systems, to see the trend along the driving path and on specific time frame and to alert in case of any variation of set limits.

## Integration to Management Software

DOTMobile can be integrated to third party software via API-Webservices to automate invoicing and synchronize with business intelligence tools.

## Fuel theft reduction

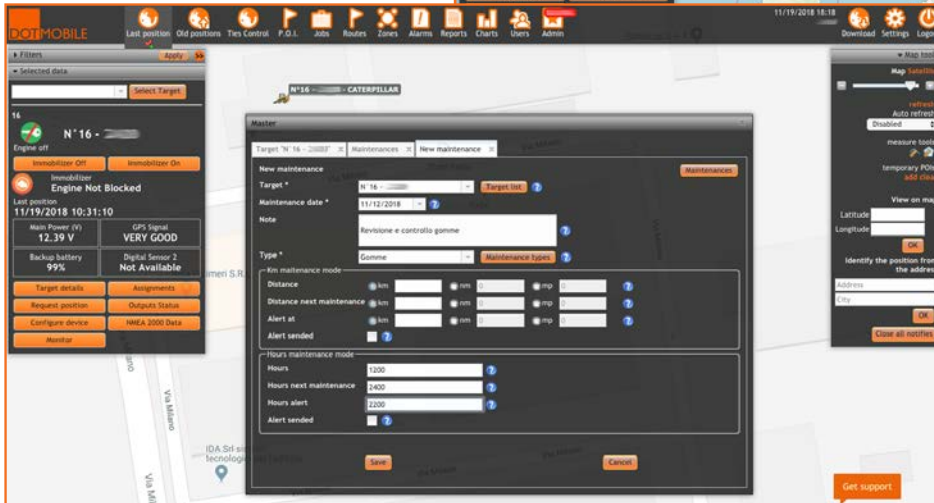
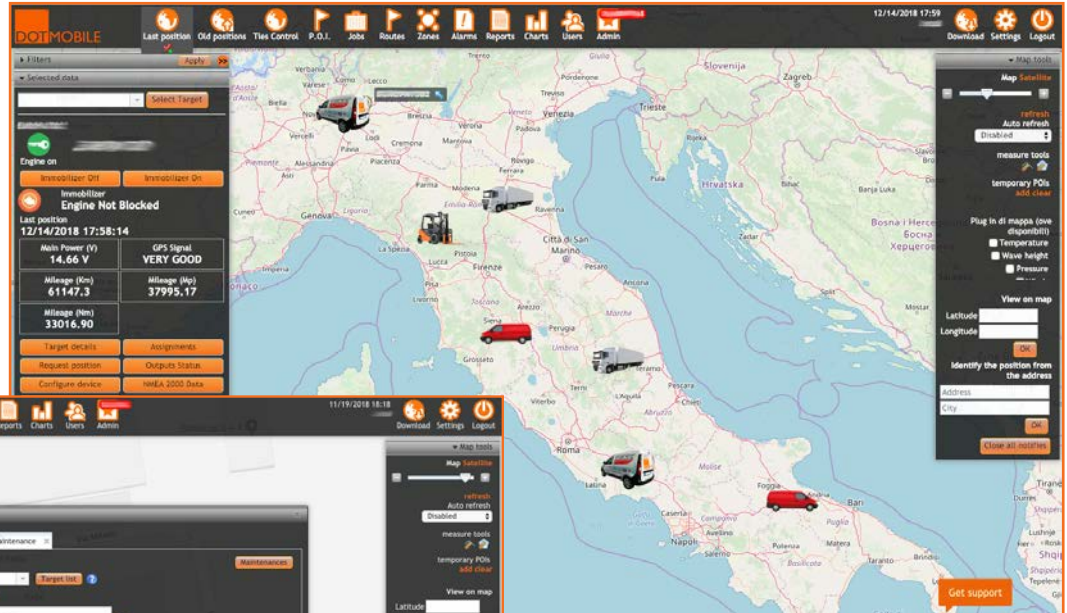
The Alarmed Tank Cap, with anti-theft strainer steel grid, combined with the identification of fuel pumps on the map as POI, are held as a deterrent against large fuel theft. Openings and refills far from the pumps will be recorded and alerted.

# Maintenance and Logistics

## Predictive Maintenance

DOTMobile makes finally possible to shift to predictive maintenance and to schedule service programs based on real usage and mileage with data automatically gathered from the fleet.

It reduces maintenance costs, avoids unexpected vehicle downtime and finally deliver a better customer experience. Properly inform customers about ordinary maintenance and co-ordinating any on-site maintenance service.



## Maintenance Scheduler

Schedule maintenance services by type and set them either by time or mileage.

Maintenance manager can set due dates for the service team.

DOTMobile maintenance module, thanks to the data automatically gathered from the fleet, will send reminders and report upcoming or overdue services.

Monitor data - speed, harsh acceleration or braking - allows to define if vehicle is properly used to finally avoid unexpected damages and extra maintenance service.

## Logistics

Having all vehicles on one screen, by type, helps fleet planners to better serve the customer with the closer vehicle needed and to reduce transport time and costs.



# Features and Devices



## **Tracking: GPS Tracking, Position, Route and Events in Real-Time with 36 months history**

View on the map your fleet with Automatic Refresh. Record all the events (i.e. harsh acceleration, braking, crash, temperature, entry/exit from zones...). View past routes and the events on the map of select time band.



## **Geofencing**

Pin&Drag multi-shape, unlimited geofencing with dedicated colour to mark specific zones - service area, storages, sheds, etc. - and set entry/exit alerts.



## **Reporting and Diagram**

All data like routes, position, driving time, speed, mileage, temperature, etc. are registered into the cloud for the last 36 months, to aggregate and report statistics with an effective dashboard. Schedule automatic report e-mail dispatch. Data can be exported on xls, csv, txt



## **Monitor**

Customizable dashboard to monitor speed (possible to set maximum speed), battery level, temperature limits. Manage mileage, fuel consumption, costs. CANbus and J1708 interface available on demand.



## **Alerts**

Multi-Alert: towing, main power loss, entry/exit from geofence, low battery, jammer, antennas removal..., via text messages, e-mail or skype to unlimited accounts, by time zone and/or geofence. Basket of 50 yearly text messages by machine included.



## **Immobilizer or RFID iButton Driver ignition control**

Disable ignition by remote from smartphone or PC, with safety algorithm which executes the command when vehicle is motionless and ignition key is off only. Or with the RFID Driver kit it's possible to identify the driver and enable ignition.



## **Maintenance Scheduler**

Set and record all maintenance service by type. Set due dates by time or mileage for the service team. Set alerts and report for upcoming or overdue services.



## **API - Web Services**

DOTMobile can be integrated to third party software via web services to exchange data.



## **Dynamic Ties Control**

Main vehicle can be electronically linked to other vehicle or attachment (parent and son) to control if they detach. Set detaching distance by vehicle.



## **POI (Point of Interest)**

Set long term or temporary POI specific to your business to be highlighted into the map to increase level of intelligence. They can be identified and set by position, address, code, description, type, icon, group.

## BlackBox and Accessories

Smart start-up with DOTMobile devices. They come already configured for your account, with global SIM plugged-in and activated. Just to be wired to the machine battery and ignition and they will automatically connect to the platform for an immediate view. No registration. No complex activation operations required.

### BB300

Compact, robust GPS unit, 8-32Vdc powered, with built-in back-up battery (48 hours), built-in and external GPS antennas with multiple I/O interface. Model with CANbus and J1708 interface available on demand.



### BB505

Self powered GPS unit with long-life replaceable battery (up to 515 days) with higher water resistance, IP67. **MAGNET**, magnetic kit to rapidly stick it on the vehicle frame, available on demand.



## BB300 Accessories



**RFiD Driver Identification KIT**  
n.1 Reader  
n.2 RFiD iButton



**Temperature Sensor**  
One AC100 I-wire interface cable and and wire temperature sensor (8m, 26,25ft)



**Alarmed Tank Cap**  
With anti-theft strainer steel grid, 60mm - 2,36" or 80mm - 3,15" diameter available

# Pricing

	Yearly Billing	Monthly Billing
<b>BASE KIT</b>	<b>\$ 132,00</b>	<b>\$ 12,00</b>
(WebPortal + App Apple/Android + Tracking + Monitor + Reporting + BlackBox)	(11,00 \$ / month)	
<b>Add-On Modules:</b>		
<b>CanBus Interface</b>	<b>\$ 36,00</b>	<b>\$ 4,00</b>
<b>MultiAlerts</b>	<b>\$ 24,00</b>	<b>\$ 2,00</b>
<b>RFiD Driver Kit</b>	<b>\$ 24,00</b>	<b>\$ 2,00</b>
<b>Temperature Sensor</b>	<b>\$ 24,00</b>	<b>\$ 2,00</b>
<b>Immobilizer</b>	<b>\$ 12,00</b>	<b>\$ 1,00</b>
<b>Maintenance Scheduler</b>	<b>\$ 12,00</b>	<b>\$ 1,00</b>
<b>Geofencing</b>	<b>\$ 12,00</b>	<b>\$ 1,00</b>
<b>POI</b>	<b>\$ 12,00</b>	<b>\$ 1,00</b>
<b>Dynamica Ties Control</b>	<b>\$ 12,00</b>	<b>\$ 1,00</b>
<b>One off contribution, by unit</b>	<b>\$ 39,00</b>	<b>\$ 39,00</b>
Including: BlackBox configuration, activation and installation of global SIM, shipment		
<b>First 3 months billed in advance (monthly billing only)</b>	<b>-</b>	<b>required</b>

## Accessories:

<b>Alarmed Tank Cap for BB300</b>	<b>\$ 169,00</b>
<b>MAGNET for BB505</b>	<b>\$ 19,00</b>

## Sales Conditions:

- Yearly agreement with automatic renewal
- Unitary prices, in US\$
- Yearly or monthly billing
- BlackBox and accessories sold free of charge
- No cancellation penalty
- Global, Multi-Carrier SIM and data traffic\* included
- BlackBox warranty automatically extended at plan renewals

End User Price List 2018 - Rel 1.0 Unitary price, US\$, Taxes excluded. For orders higher than 20 units ask for a quote

\* Australia, Canada, Cayman Islands, Europe, Mexico, New Zealand, SouthAfrica, US included. Others will be charged separately, contact us for their rates. Basket of 50 yearly text messages per machine included, overage invoiced separately. Unlimited, free of charge e-mails and skype messages.



dotmobile.io

**USA**

13499 Biscayne Blvd.TS1 - Miami FL 33181  
info@dotmobile.io

**EU**

Via Romolo Murri 21 - 48124 Ravenna IT  
info@puntomobile.it

Products, technical specifications and prices are subject to possible variations or cancellations without prior notice.  
Products and brands shown are the property of their respective owners or holders.