



**Global GPS Tracking system to protect and control
any kind of watercraft: Jet Ski, Seabob, Ribs e Boats**

dotmobile.io

For single watercraft or mixed fleet

For Owners, Clubs and Rental Business

Peace of Mind

Protects your water assets and your investments: seabob, jet skis, ribs, boats and hikers.

Check position, routes, speed and batteries.

He calls you by phone in case of alarm.

It can block the ignition in case of abandonment in uncontrolled areas.

It allows a quick recovery in case of theft, reducing the damages due to prolonged interruptions of the activities.

Improve operations, safety and customer satisfaction

Check the rentals, reporting them and identifying any responsibilities to avoid the most possible disputes.

It lets you see where all the boats are in one screen. Improve fleet management. Increases competitiveness and customer service. It can be integrated with the management software for rentals via API-Web Services.

Increases customer security

It avoids navigating in dangerous areas and helps you find your way back.

It is interactive: it can automatically alert customers when the boat enters risky areas or exceeds the speed limit.

Unique and Flexible Offer

DOTMobile offers a wide selection of compact devices, with integrated GPS Tracker and IP67 water resistant for each application.

The devices can be purchased or included free of charge with a lifetime warranty. The fee may be annual or seasonal.

The PAYperUSE formula is also available to meet any need.

Global Tracking

Locate and track individual vehicles, groups or the entire fleet in real time on several maps: Navionics, Marine, Google, Openstreet

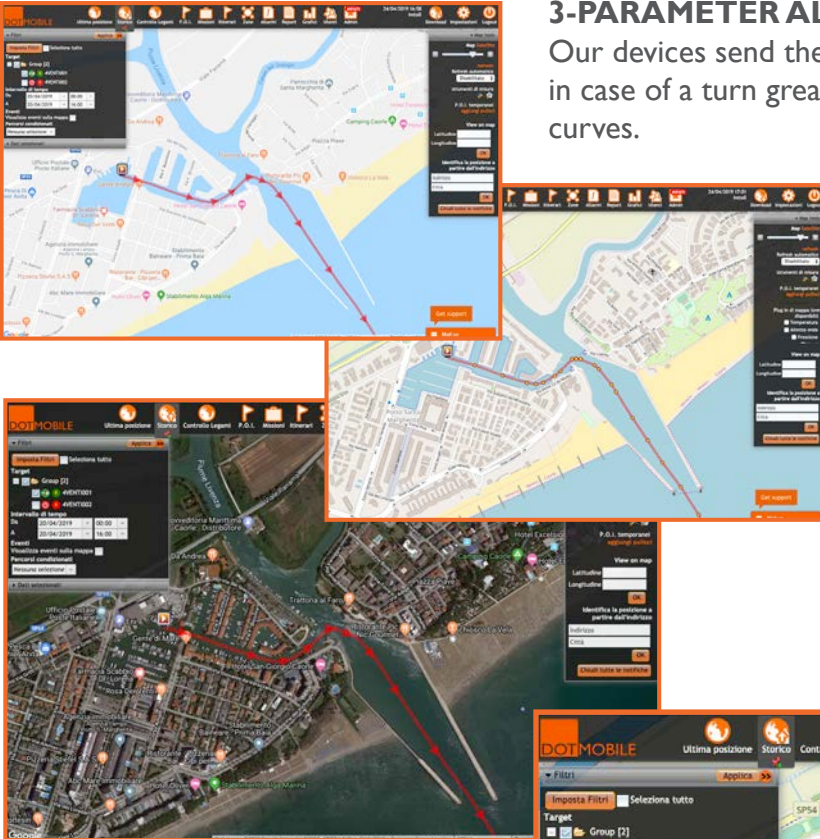
3-PARAMETER ALGORITHM

Our devices send the position every 0.054nm, or every 30 seconds, or in case of a turn greater than 10° , drawing perfect lines and complete curves.

DOTMobile App Android - iOS

Control in REAL TIME your watercraft:

- watch Last Position
- switch ON/OFF alarms
- lock/unlock Engine
- switch ON/OFF device on board
- view History
- follow the watercraft

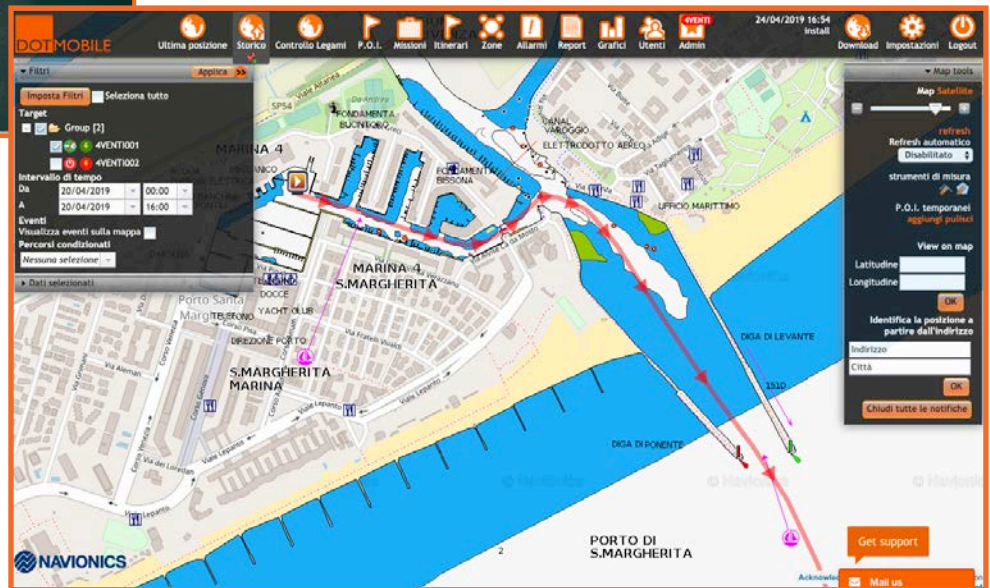


36 months HISTORICAL DATA

Positions and events are recorded and analyzed for days and time bands, also for ascertaining any responsibilities and resolving disputes.

Global Multi-Carrier SIM

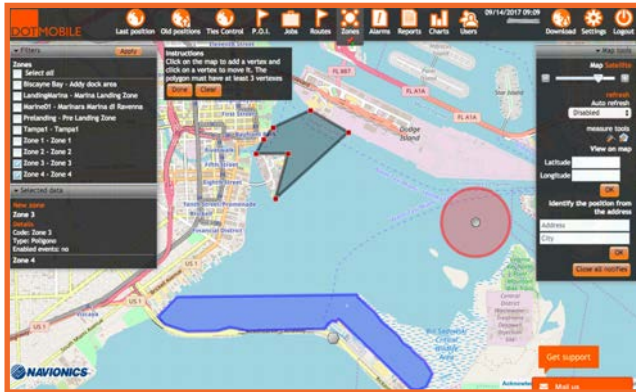
Our sim ensures maximum coverage wherever your boat is.



Total Control and Security 24/7

MULTI-ALARMS

Start, towing, removal, low battery, main power loss, entry or exit from an area, maximum speed exceeded, are just some of the events that can be reported to an unlimited number of recipients, via SMS, E-Mail, Skype or Alert Call.



WARNINGS ON BOARD

In case of entry into dangerous or non-navigable areas, or in the event of exceeding the speed limit, DOTMobile can **automatically activate sirens or alarm lights on board**, alerting customers or crew.



INTERACTIVE GEOFENCING

Using the **Pin & Drag** function, it is possible to draw a **unlimited multi-shape, circular, polygonal and convex areas, to mark dangerous, non-navigable, anchor or docking areas.**



IGNITION CONTROL

Optimizes battery consumption and for towing alert when watercraft moves with engine key off.

IMMOBILIZER

Lock engine ignition to fastentheft recovery of key assets, or when they are left in unstaffed locations.

Unique ALERTCALL !

Scared of failing to hear a text message in case of theft, towing, exit from geofence, low battery or overspeed?

With AlertCall, DOTMobile automatically warns unlimited phone numbers with a customizable multi-language voice message.

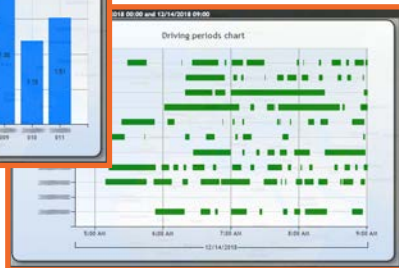
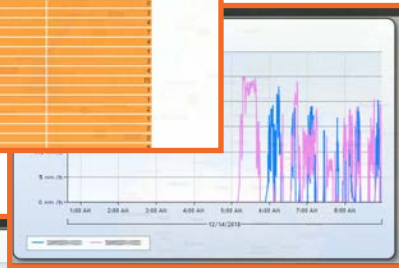
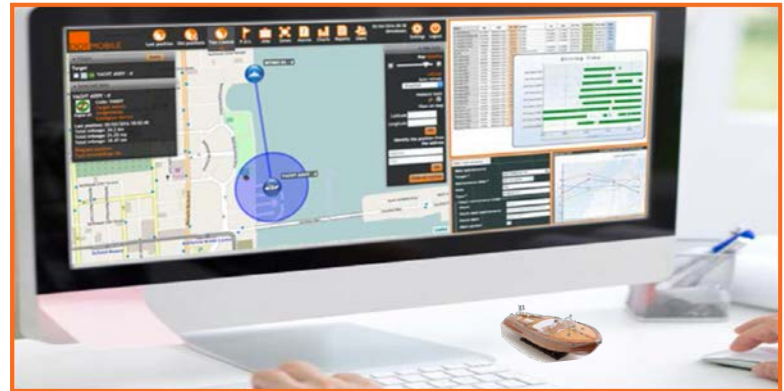
Full Management

MAINTENANCE REGISTER and SCHEDULER

Record and Plan the Maintenances to simplify operations, reducing costs with the the analysis of collected data. Receive warnings of upcoming maintenance.



All data like events, alarms, working hours, speed, position, battery charge, etc. are recorded on the cloud for 36 months and can be analyzed using an effective and intuitive dashboard.



Monitor and Tele-Control

watercraft, engines, batteries, sensors and equipment with your Smartphone or PC.

Switch ON/OFF batteries, lights, pumps, air conditioning, warning / recall lights, flashing lights or sirens by remote.



Extend monitoring to jetskis, tenders and workforce by 'tying' them digitally to the main vessel and receiving alerts when they detach with the **Dynamic Ties Control**.

Devices

The DOTMobile devices are compact and robust for marine applications (IP67), with integrated GPS Tracker to control any vehicle or hikers. Already configured for the customer, with Global SIM inserted and activated, they are immediately ready for use. They do not require complex registration or activation operations.



Specifications	BlackBox GV075	BlackBox GL505	BlackBox GV300
Main Power	8-32 V	Repleceable Battery Up to 510 days	8-32 V
Backup Battery	Li-Polymer 1.100 mAh Up to 70 hours		Li-Polymer 250 mAh Up to 36 hours
Ignition Key Control	•		•
Immobilizer	•		•
Interactive On Board Warning (Recall Light, Siren, ...)	•		•
SOS Button			Optional
Digital I/O			2/1
RFiD - Captain ID: Lock/Unlock Engine			Optional
Internal GPS and GSM antennas	•	•	•
External GPS antennas			•
Water Resistance (IP)	X7	X7	
Operating temperature	-30 C +70 C -22 F +158 F	-20 C +60 C -4 F +140 F	-30 C +70 C -22 F +158 F
Dimensions (LxHxW)	mm 46X102x20.5 in 1.81x4.02x0.81	mm 118x69,5x27 in 4.65x2.74x1.06	mm 80x49x26 in 3.15x1.93x1.02
CE/FCC/E Mark Certified	•	•	•

Just install it
for an immediate view
on DOTMobile!



Prices

DOTMobile, with the same performance, is available in different formulas to meet any need related to the seasonality of the activity, the duration of the warranty on the devices and the budget.

Plans offers a continuous service, while the PAYperUSE allows you to turn on/off the service at will by scaling up pre-paid daily credits.

DOTMobile	DOTMobile Plus	PAYperUSE Global Tracking
Include: - Global Tracking - Security 24/7	Include: - Global Tracking - Security 24/7 - Full Management	On-Demand Use Turn service ON/OFF via App or WebPortal
DIGITAL SERVICE	DIGITAL SERVICE	DIGITAL SERVICE
Yearly \$ 99 (\$ 8.25/mo)	Yearly \$ 119 (\$ 9.92/mo)	Credit Pack 1 Credit = 1 day x 1 device 30 days \$ 39 (1.30/day) 90 days \$ 79 (0.88/day) 180 days \$ 99 (0.55/day) 450 days \$ 229 (0.51/day) 900 days \$ 419 (0.47/day) 1,800 days \$ 799 (0.44/day) 4,500 days \$1,899 (0.42/day)
Monthly \$ 9.50	Monthly \$ 11	
DEVICE	DEVICE	DEVICE
GV075 \$ 149	GV075 \$ 149	GV075 \$ 149
GL505 \$ 179	GL505 \$ 179	GL505 \$ 179
GV300 \$ 159	GV300 \$ 159	GV300 \$ 159

Voice calls can be purchased directly from WebPortal by credit card: 24 calls \$29,00 - 48 calls \$39,00 - 96 calls \$69,00

Conditions:

End User Price List 2019 - Rel 2.0 Unitary price, US\$.

Payment in advance. DOTMobile and DOTMobile Plus Plans with yearly contract with automatic renewal. Monthly billing: min 5 pieces required.

Monthly billing first 3 months payed in advance. PAYperUSE allows to turn the Tracking service ON and OFF by remote, either via App or WebPortal. No contract. It works with credits which can be used for any unit of the fleet and grants up to one day of Tracking for one device. Credits can be instantly recharged on DOTMobile Webportal.

Global SIM and Data Traffic: Australia, Canada, Cayman Islands, Europe, Mexico, New Zealand, SouthAfrica, US included. Others will be charged separately, contact us for their rates.

30 monthly text messages per account included, overage invoiced separately. Unlimited, free of charge e-mails and skype messages.

One-Off contribution for each device configuration, activation and shipment: \$ 29 for US, Canada, Europe and \$ 49 for all others.

For orders higher than 10 units ask for a quote.



dotmobile.io

USA

13499 Biscayne Blvd.TS1 - Miami FL 33181
info@dotmobile.io

EU

Via Romolo Murri 21 - 48124 Ravenna IT
info@puntomobile.it

Products, technical specifications and prices are subject to possible variations or cancellations without prior notice.
Products and brands shown are the property of their respective owners or holders.