

**Global GPS Tracking and Telematics for  
Heavy, Compact and Earth Moving Equipment,  
Aerial Lift, Fork Lift, Crane**

[dotmobile.io](http://dotmobile.io)

**The cost-effective solution which helps taking control of mixed fleets, increasing security, safety and improving productivity**

## **for Owners and Rental Business**

### **Security and Protection**

**Better protect your investments, any type of construction equipment, generators, pumps.**

**Fasten theft recovery of key assets, reduce impact on your business due to prolonged outages.**

### **Reporting and Billing**

**Simplify reporting, maximize billing and improve cost control to support business management. Increase profitability by reviewing actual machinery workload, works overtime or during public holidays with data automatically collated about position, engine on/off, PTO use and sensors. Discourage abuse, false machine downtime. It can be integrated to the management software.**

### **Maintenance and Logistics**

**Make operation easier, reduce costs and unexpected machinery downtime, thanks to the predictive maintenance based on actual working hours.**

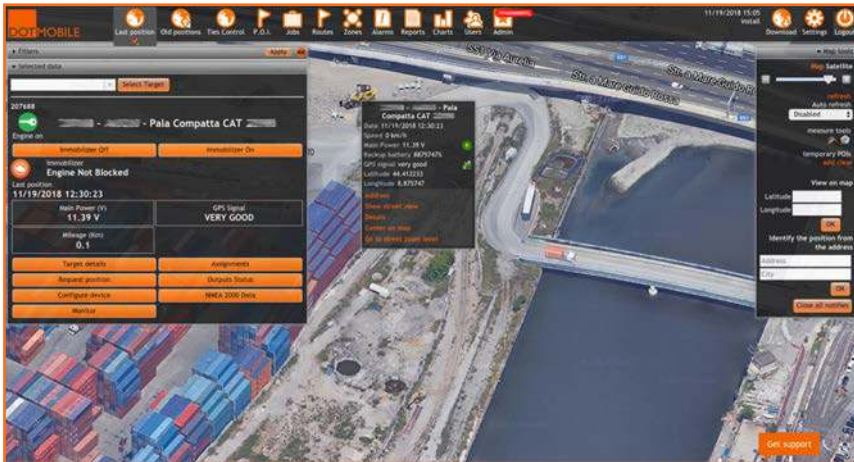
**Schedule maintenance jobs and automatically send reminder to management and report upcoming or overdue maintenance. Having all equipment on one screen helps fleet planners to better serve the customer with the closer machinery needed and reduce transport time and costs.**

### **Total System Configurability**

**Finally our customers can define the subscription fee based on each single feature, selecting those needed only, instead of packages with set of predefined features that they are obliged to pay even if not needed.**

# Total Control and Security 24/7

## Global Real Time GPS Tracking - Multi-Map ( Google, Google Satellite and Openstreet ) with Anti-Jammer System



### TRACKING - 3 Parameter Algorithm

Our devices send the position every 0.062mi, or every 30 seconds, or in case of a turn greater than 10°, **drawing perfect lines and complete curves.**



### DUAL MODE IMMOBILIZER and IGNITION CONTROL

#### IGNITION LOCK

Disable ignition by remote.

#### Real Time SHUT OFF

Shut off by remote.



### 36 months Historical Data and Routes

DOTMobile Cloud records all data (routes and events) from any asset for the last 36 months which can be reviewed and exported at any time.

**POWER SAVING MODE - Saving Battery** DOTMobile devices enter in Power Saving mode when the engine is turned off, to save the asset battery. They are activated in the event of starting or removing the asset.



### INTERACTIVE GEOFENCING and POI

Using the **Pin&Drag** function it is possible to draw **unlimited multi-shape**, circular, polygonal and convex areas, **to mark**



- dangerous areas  
- shed or storages

- geographic boundaries  
- yard or constructin sites



### MULTI-ALARMS 24/7

to unlimited phone numbers or recipients

via

- Text Message SMS
- Phone Call
- E-Mail
- Skype

- Engine On/Off
- Towing
- Removal
- Jammer
- Crash
- Overcome Speed
- Main Battery Low
- Main Power Loss
- Entry / Exit Geofence

Scared of failing to hear a text message?

**With Alert Call, DOTMobile automatically warns unlimited phone numbers with a customizable multi-language voice message.**

# Data Analysis - Integration - Billing Automation

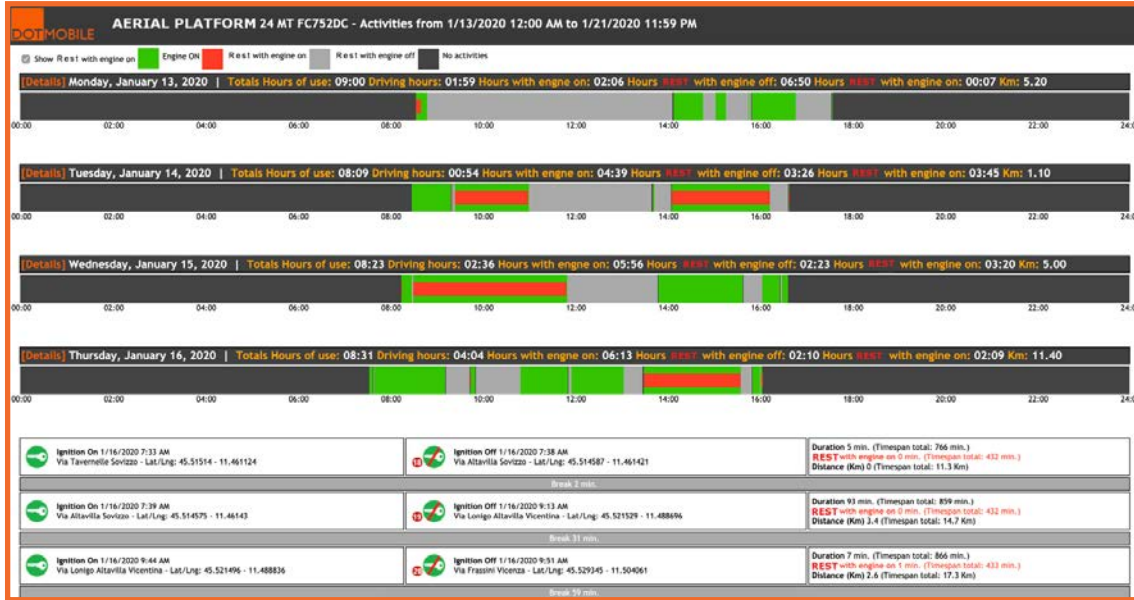


## Workload Report and Analysis

The combination of all DOTMobile features allows to control and review the machinery and equipment workload to support business management.



Data about actual workload time, distance, analogic and digital input wired to PTOs, are automatically gathered and can be exported, analysed via reports and diagrams.



The ignition control detect and calculate works overtime or during public holidays to maximize billing, enforce compliance to your contract and discourage abuse, false machine downtime due to weather.

## Automatic Report Dispatch

Users can schedule automatic report dispatch to ensure to regularly receive select report on their e-mails.

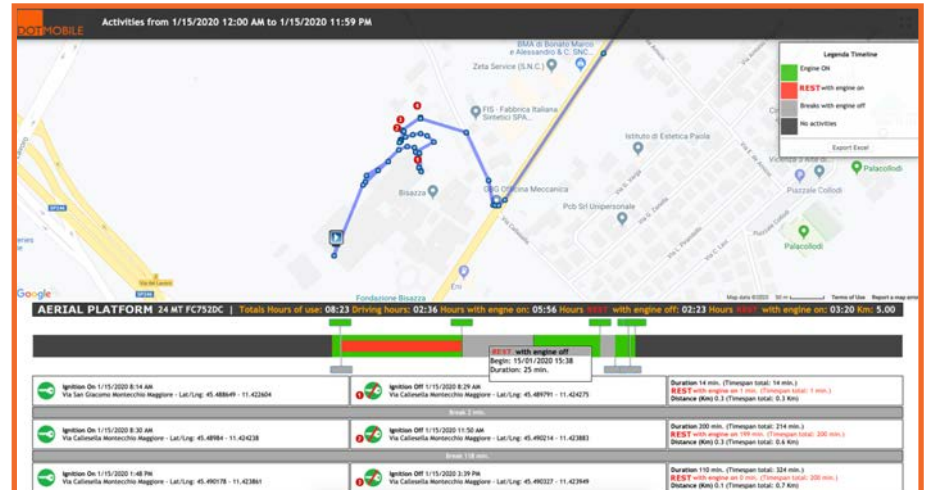


## Integration to Management Software

DOTMobile can be integrated to third party software via API-Webservices.

Contractors can automate invoicing and synchronize with business intelligence tools.

ACTUAL WORKLOAD ACTIVITY TIME													
Report	Device	Address	City	State	Country	Lat	Lng	Start	End	Duration	Rest	Rest with engine on	Rest with engine off
M138	11/16/2020 7:33 AM	Via Tavernelle Sovizzo	Italy	Lat/Lng: 45.51514 - 11.46124	Ignition On	7:33 AM	7:38 AM	5 min.	0 min.	0 min.	0 min.	0 min.	0 min.
M138	11/16/2020 7:38 AM	Via Altavilla Sovizzo	Italy	Lat/Lng: 45.514587 - 11.461421	Ignition Off	7:38 AM	9:13 AM	93 min.	0 min.	0 min.	0 min.	0 min.	0 min.
M138	11/16/2020 7:39 AM	Via Altavilla Sovizzo	Italy	Lat/Lng: 45.514575 - 11.46143	Ignition On	7:39 AM	8:02 AM	23 min.	0 min.	0 min.	0 min.	0 min.	0 min.
M138	11/16/2020 9:13 AM	Via Longo Altavilla Vicentina	Italy	Lat/Lng: 45.521529 - 11.488496	Ignition Off	9:13 AM	9:20 AM	7 min.	0 min.	0 min.	0 min.	0 min.	0 min.
M138	11/16/2020 9:44 AM	Via Longo Altavilla Vicentina	Italy	Lat/Lng: 45.521496 - 11.488336	Ignition On	9:44 AM	10:43 AM	59 min.	0 min.	0 min.	0 min.	0 min.	0 min.



# Maintenance and Logistics



## Predictive Maintenance

DOTMobile makes finally possible to shift to predictive maintenance and to schedule service programs based on real usage and effective machine workload with data automatically gathered from the fleet.

It reduces maintenance costs, avoids unexpected machinery downtime and finally deliver a better customer experience. Properly inform customers about ordinary maintenance and co-ordinating any on-site maintenance service.

The screenshot displays the DOTMobile Predictive Maintenance interface. The main map shows various pieces of machinery (tractors, excavators) across a geographical area. A detailed panel for machine '200016 - Pala Gomme CAT 938/STD' is visible, showing 'Engine off', 'Immobilizer Off', and 'Engine Not Blocked'. It also displays 'Main Power (V) 22.97 V', 'GPS Signal VERY GOOD', and 'Mileage (Km) 0'. A 'Maintenance Scheduler' panel is also shown, allowing users to set 'New maintenance' with a target date (11/10/2018), type (Tires Check), and various maintenance intervals (Distance, Hours, Alert) and send alerts.

The screenshot displays the DOTMobile Maintenance Scheduler interface. It shows a form for scheduling maintenance services. The 'Type' is set to 'Tires'. The 'Target' is set to '11/10/2018'. The 'Note' field contains 'Tires Check'. The 'Alert' field is set to 'Alert'. The 'Hours maintenance mode' is set to 'Hours'. The 'Alert send' field is set to 'Alert'. The 'Send' button is visible at the bottom.

## Logistics

Having all equipment on one screen, by type, helps fleet planners to better serve the customer with the closer machinery needed and reduce transport time and costs. Moreover each machinery can be defined with detailed features to better identify type of transport.

## Maintenance Scheduler

Schedule maintenance services by type and set them either by actual working hours, mileage or fixed day.

Maintenance manager can set due dates for the service team.

DOTMobile maintenance module, thanks to the data automatically gathered from the fleet, will send reminders and report upcoming or overdue services.

Monitor how machinery is used - speed, harsh acceleration or braking, PTOs and sensors - allows to define if machinery is properly used to finally avoid unexpected damages and increase safety for drivers by driving better practice.

# Features and Devices



## GPS Tracking, Position, Route and Events in Real-Time with 36 months history

View on the map your fleet with Automatic Refresh. Record all the events (i.e. harsh acceleration, braking, crash, PTO on/off, entry/exit from zones...). View past routes and the events on the map of select time band.



## Geofencing

Pin&Drag multi-shape, unlimited geofencing with dedicated colour to mark specific zones - construction sites, storages, sheds, etc. - and set entry/exit alerts.



## Reporting and Diagram

All data like routes, position, driving time, speed, distance, PTOs activity, working hours, ignition on/off, idle time, alerts events, etc. are registered into the cloud for the last 36 months, to aggregate and report statistics with an effective dashboard. Schedule automatic report e-mail dispatch. Data can be exported on xls, csv, txt



## Monitor

Customizable dashboard to monitor speed (possible to set maximum speed), battery level, PTO/input/output on/off, etc. Manage distance, fuel consumption, costs (time/mileage). CANbus and J1708 interface available on demand.



## Alerts

Multi-Alert: engine on, towing, entry/exit from geofence, low battery, jammer, antennas removal..., via text messages, e-mail or skype to unlimited accounts, by time zone and/or geofence. Basket of 50 yearly text messages by machine included.



## Immobilizer

Disable ignition by remote from smartphone or PC, with safety algorithm which execute the command when machine is motionless and ignition key is off only.



## Maintenance Scheduler

Set and record all maintenance service by type. Set due dates by working hours or mileage for the service team. Set alerts and report for upcoming or overdue services.



## API-Web Services

DOTMobile can be integrated to third party software via web services to exchange data.



## Dynamic Ties Control

Main machine can be electronically linked to its attachment (parent and son) to control if they detach. Set detaching distance by machine.



## POI (Point of Interest)

Set long term or temporary POI specific to your business to be highlighted into the map to increase level of intelligence. They can be identified and set by position, address, code, description, type, icon, group

## BlackBox and Accessories

Smart start-up with DOTMobile devices. They come already configured for your account, with global SIM plugged-in and activated. Just to be wired to the machine battery and ignition and they will automatically connect to the platform for an immediate view. No registration. No complex activation operations required.

### GV300

Compact, robust GPS unit, 8-32Vdc powered, with built-in back-up battery (48 hours), built-in and external GPS antennas with multiple I/O interface. Model with CANbus and J1708 interface available on demand.



### SHELL

IP67 water resistant case for BB300

### GL505

Self powered GPS unit with long-life replaceable battery (up to 515 days) with higher water resistance, IP67.



### MAGNET

Magnetic kit to rapidly stick the BB505 on the machine frame

# Pricing

	<b>Yearly Billing</b>	<b>Monthly Billing</b>
<b>BASE KIT</b> (Tracking + Multi-Alarms 24/7 + Immobilizer + Geofencing + POI + Monitor + Reporting)	<b>\$ 99.00</b> (\$ 8.25 / month)	<b>\$ 9.50</b>
<b>Optional Features:</b>		
<b>CanBus Data</b>	<b>\$ 36.00</b>	<b>\$ 4.00</b>
<b>Maintenance Scheduler</b>	<b>\$ 24.00</b>	<b>\$ 2.50</b>
<b>Dynamic Ties Control</b>	<b>\$ 12.00</b>	<b>\$ 1.50</b>
<hr/>		
<b>Devices and Accessories:</b>		
<b>BlackBox GV300</b>	<b>\$ 159.00</b>	
<b>BlackBox GL505</b>	<b>\$ 179.00</b>	
<b>SHELL IP67 for BB300</b>	<b>\$ 49.00</b>	
<b>MAGNET for BB505</b>	<b>\$ 19.00</b>	



## Unlimited License for XLarge Fleets

The unlimited license allows you to have maximum performance at a fixed cost, independent of the number of assets and without recurring costs due to the data traffic.

- **Flat Rate (larger fleet = lower cost per asset)**
- **Unlimited number of assets**

Ask for a quote

---

**Voice calls can be purchased directly from WebPortal by credit card: 24 calls \$29.00 - 48 calls \$39.00 - 96 calls \$69.00**

### Conditions:

End User Price List 2019 - Rel 2.0 Unitary price, US\$.

Payment in advance. DOTMobile and DOTMobile Plus Plans with yearly contract with automatic renewal. Monthly billing: min 5 pieces required.

Monthly billing first 3 months payed in advance.

Global SIM and Data Traffic: Australia, Canada, Cayman Islands, Europe, Mexico, New Zealand, SouthAfrica, US included. Others will be charged separately, contact us for their rates.

30 monthly text messages per account included, overage invoiced separately. Unlimited, free of charge e-mails and skype messages.

One-Off contribution for each device configuration, activation and shipment: \$ 29 for US, Canada, Europe and \$ 49 for all others.

**For orders higher than 10 units ask for a quote.**



dotmobile.io

**USA**

13499 Biscayne Blvd.TSI - Miami FL 33181  
info@dotmobile.io

**EU**

Via Romolo Murri 21 - 48124 Ravenna IT  
info@puntomobile.it

Products, technical specifications and prices are subject to possible variations or cancellations without prior notice.  
Products and brands shown are the property of their respective owners or holders.